

IMPLEMENTATION STRATEGY

The Implementation Strategy for the Comprehensive Plan highlights and details a variety of critical actions and procedures that will be necessary to realize the community's vision.

Mapping Place Types

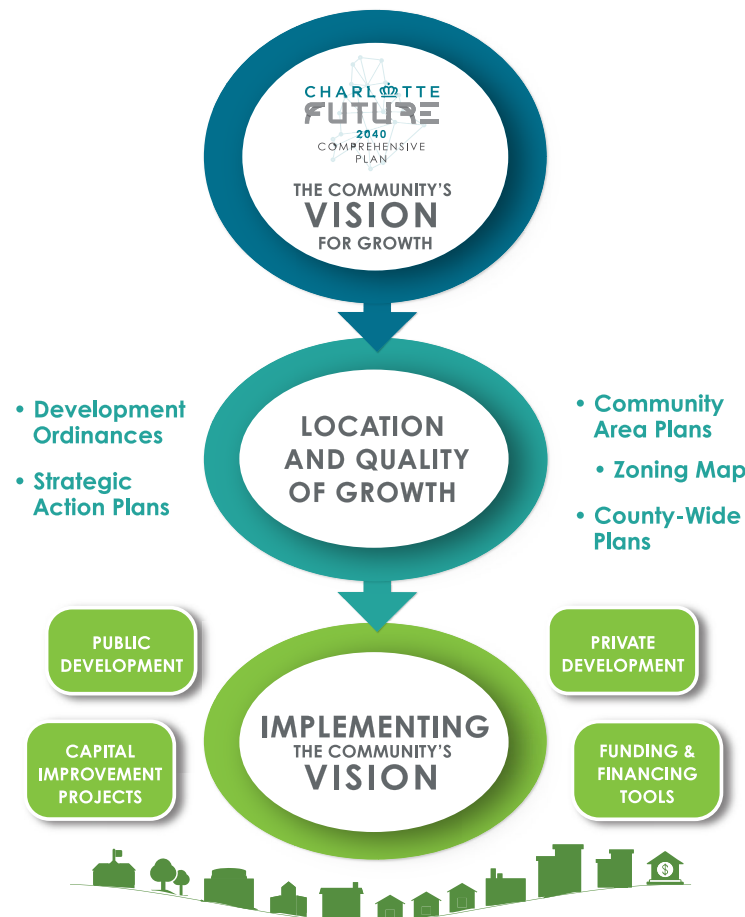
👑 Create 15 smaller geographies within Charlotte to facilitate local conversations

Relationship to the Unified Development Ordinance

👑 The UDO will identify zoning districts and other ordinances that will further define how the Place Types are realized in actual development

Capital Improvement Projects

👑 Guidance for identifying and prioritizing candidate projects for the community



Community Area Planning

👑 A more coordinated, efficient and effective structure for neighborhood planning

Funding and Financing Tools

👑 Tools include public-private partnerships (P3), Community Benefits Agreements (CBAs), development impact fees, and others

